

The Mystic Geek - Spiritual AF Sundays

The Art of Artificial Intelligence

What We're Going to Talk About

- Concepts & Terms
- Concerns Regarding AI
- Spiritual Implications of AI



Concepts & Terms

LET'S GET ON THE SAME PAGE WITH WHAT I
MEAN WHEN I SAY VARIOUS THINGS

What is AI?

MACHINE-BASED INTELLIGENCE

As opposed to intelligence demonstrated by a human or animal.



The "Turing Test"

CAN MACHINES THINK?

Unfortunately, can only observe the behavior. We cannot prove that the machine is thinking or has a mind.



Potential Goals of AI

"ARTIFICIAL INTELLIGENCE: A
MODERN APPROACH"
BY STUART RUSSELL
& PETER NORVIG

- Systems that think like humans
- Systems that act like humans
- Systems that think rationally
- Systems that act rationally



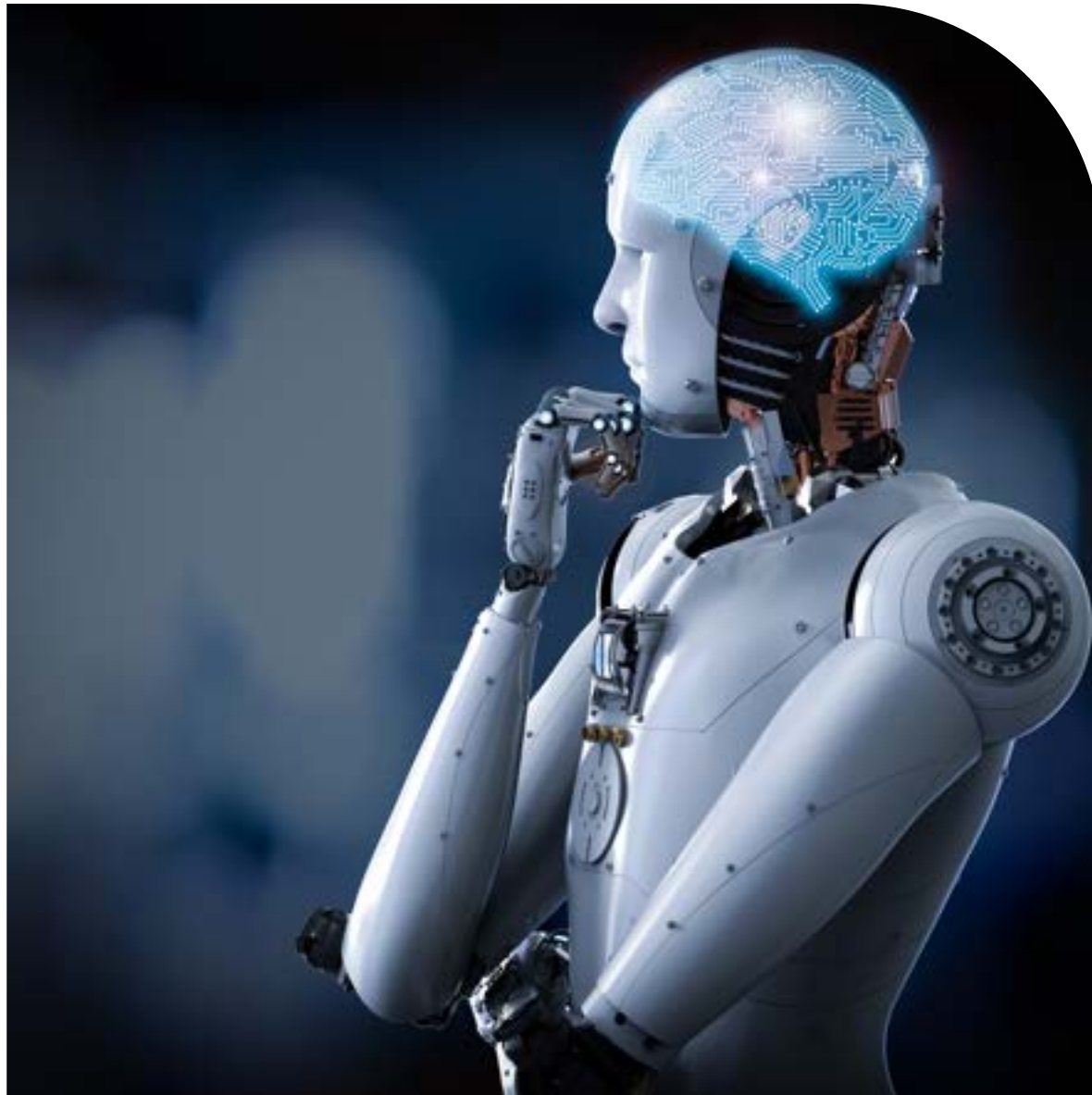


Types of Artificial Intelligence

NARROW AI

Machines that are trained to perform a specific task

Examples: Siri/Alexa, Recommendations ("Top Tweets", "Because You Watched", etc.), Spam Filters



Types of Artificial Intelligence

ARTIFICIAL GENERAL INTELLIGENCE
ARTIFICIAL SUPER INTELLIGENCE

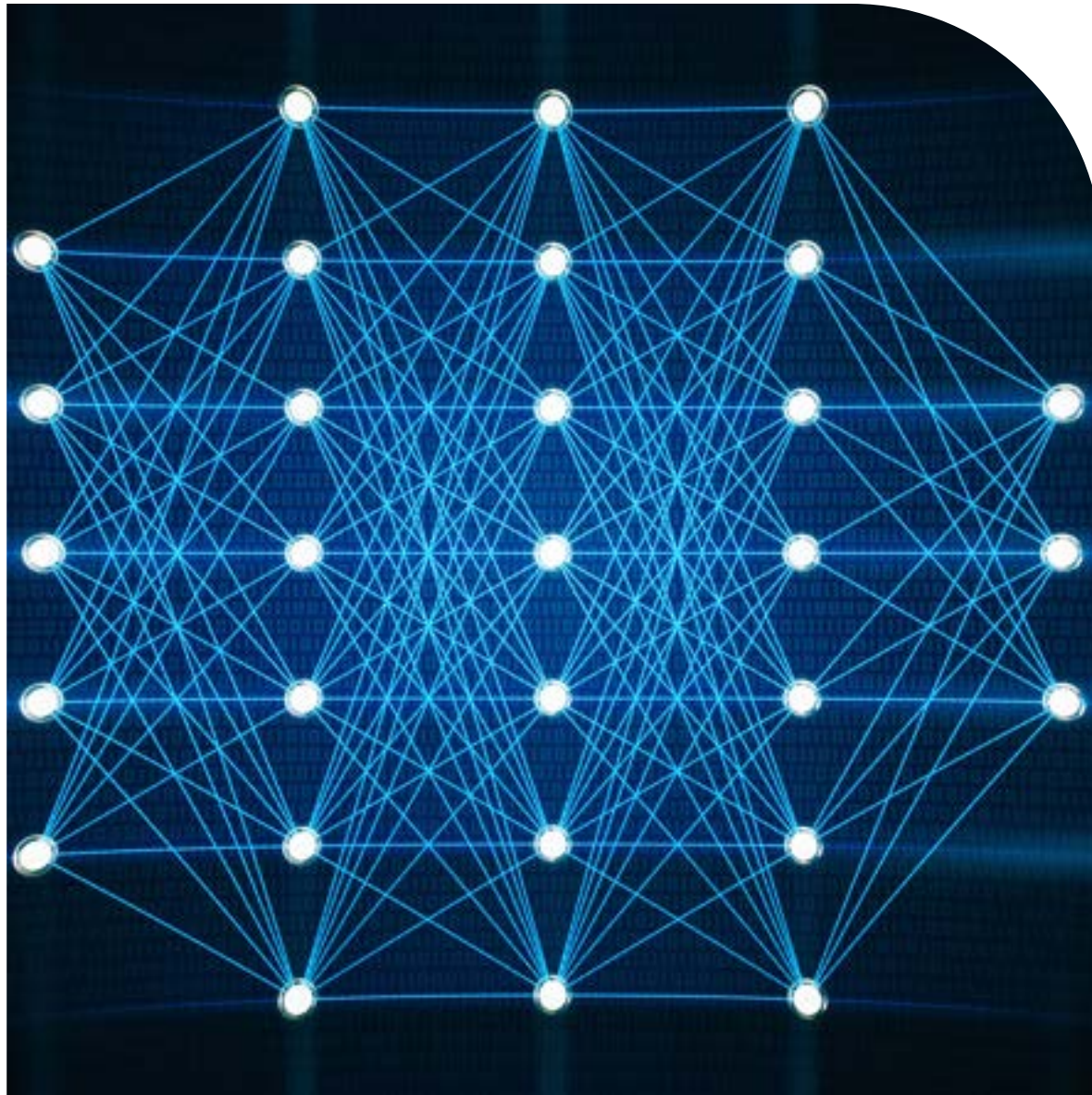
Forms of AI that are still in the realms of science fiction - having the ability to learn beyond assigned limitations and become self-aware



Terms in Artificial Intelligence

MACHINE LEARNING

This sub-field of AI sets up a machine to be able to come up with its own algorithms/processes, thus "learning" how to perform a task or analyze data without people providing explicit parameters.



Types of Artificial Intelligence

DEEP LEARNING

This sub-field of machine learning uses layers of algorithms to solve problems and/or make predictions.

Example: Image recognition

Concerns Regarding Artificial Intelligence

ADDRESSING THE ELEPHANTS IN THE ROOM



Data Sourcing

WHO OWNS WHAT?

How is the data that we use in machine learning acquired?

- Individuals are the initial owners of their own data / creative works.
- Did the initial owners give informed consent?
- Some companies scrape data from the Internet sites like Pinterest and DeviantArt

Data Sourcing

WHO OWNS WHAT?



- Large-scale Artificial Intelligence Open Network (LAION): a non-profit that releases free datasets for AI research and development
- Datasets used to train image generator models like Stable Diffusion
- Can include people's medical records without their consent
- <https://haveibeenentrained.com/> - Check if your images/art are used in AI models

Machine Learning

WHO IS SETTING THE DIRECTION?

- Algorithms change based on each interaction in order to "optimize"
- How someone uses an unmoderated ML-based application impacts future users' experiences



Machine Learning

LENSA'S IMPACT

- Uses a mix of Stable Diffusion AI model plus user-submitted photos to generate profile images
- Source artwork plus end-user feedback can skew the model toward generating NSFW images.
- Results: Output skewed by gender and racial biases. Some users received NSFW images without consent.



Lensa-generated profile image, commissioned by me

Impact on Equality

SKEWED INPUT = SKEWED OUTPUT

- Without oversight, ML applications can reinforce cultural biases.
- In health care: What data points should ML use to define categories like "Sick" vs. "Healthy"? Who is included in the sampling?
- In profit-based systems, ML can adversely affect how members of marginalized groups receive care.



Transparency

THE TOS ISN'T ENOUGH

The end-user is not the expert (nor should they be).

Many people don't have the time/energy/expertise to understand the fine print and don't learn about the consequences until it's too late.





Impact on Jobs/Income

IN A LATE-STAGE CAPITALISM SOCIETY

We live in a society where housing, health care, and food are not viewed as human rights. Access is often dependent on income, determined by the value of one's labor within society.

Accountability

SHIFTING RESPONSIBILITY

We need better laws to protect copyright & data privacy.

We also need more oversight on how data is used within machine learning models and how ML impacts business and social policies



Spiritual Implications Regarding AI

THE DEEP S*** WE'D LIKELY PONDER IF WE
WEREN'T CONCERNED WITH ITS IMPACT

WTF is Spirituality?

CONNECTION + MEANING

Spirituality focuses on our connection with the world around us as well as our understanding of ourselves.

We examine our personal values and life purpose and choose whether to live with integrity.



Freeing Our Time & Focus

UNBURDENING OUR MINDS

Leveraging Artificial Intelligence to handle menial, repetitive tasks could free us up to focus our time and effort on the things we value in life.





Or Will It?

THE DARK SIDE OF THE ALGORITHM

Without oversight, AI-driven tools can encourage social engineering by making societal change more difficult or driving it in a specific direction.

Example: Social media feeds that put users into "engagement bubbles", which limit exposure to different views and can thus hinder empathy



What Does It Mean to Be Human?

WHAT MAKES US UNIQUE?

- Are there characteristics that we consider to be solely human traits?
- Are there characteristics that we consider to be exclusive to living beings?
- What happens when we observe machines exhibiting such traits?



What Does It Mean to Be Human?

EXAMPLES OF HUMAN TRAITS

- Creativity / Innovation
- Moral/Ethical Decision-Making
- Empathy
- Adaptability



Credit: 20th Century Fox

Artificial Intelligence and Morality/Ethics

EXAMPLE: I, ROBOT

- Triage scenario - who do you save?
- Robot chose to save Detective Spooner (Will Smith's character) who had a 45% chance of survival, whereas the young girl Sarah had an 11% chance
- Detective Spooner believes the robot should have saved Sarah



Credit: Bioware

Artificial Intelligence and Morality/Ethics

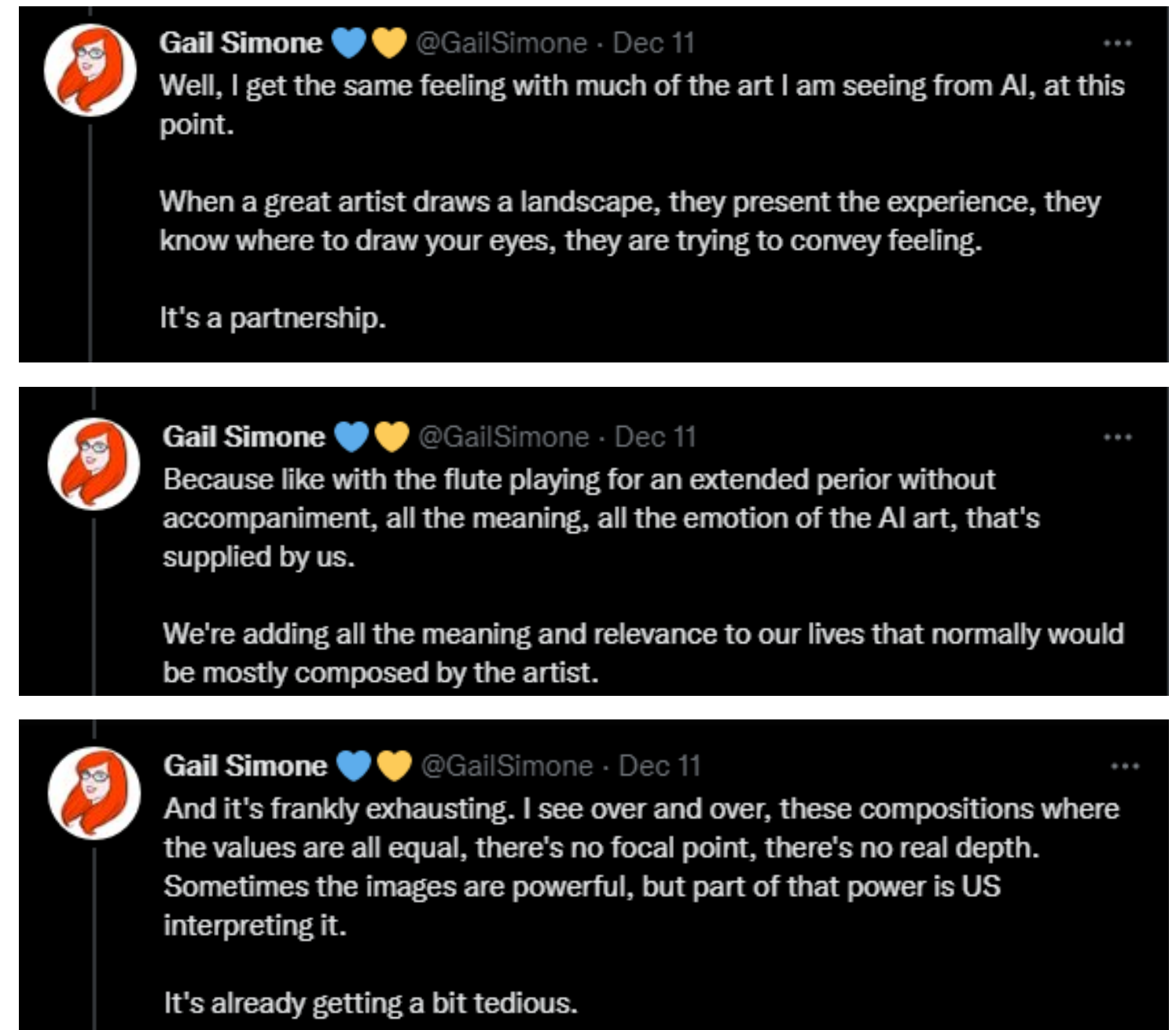
EXAMPLE: MASS EFFECT SERIES

- Leviathans develop a machine to preserve life ("lesser races") at any cost.
- Machines needed data from organic life to learn and fulfill their purpose.
- Response: Cycles of harvesting organic life once it reaches a certain level of sentience/development

Spirituality and Art

EXPRESSION & CONNECTION

- Art can be seen as a conversation between the artist and the audience.
- AI-generated creations are akin to trying to have a conversation with a machine or possibly talking to oneself.
- With human-generated art, you can connect with the artist's vision (or ask about their intention)



Spirituality and Art

IMAGINATION AND AI

- Who is the artist? The machine or the end user (who provides the prompts)?
- What is the difference between AI-generated work and humans creating derivative work?
- Even if it requires human influence, can an AI's process still be considered "imagination"?





The Impact of Our Participation

SMALL ON THE GRAND SCALE,
BUT STILL IMPORTANT

- Where we spend our energy (time + money) can influence the future.
- We can be more intentional about which AI platforms we interact with
- We can also support individual creators either through patronage or promotion



Support Watchdog Organizations

ALGORITHMIC JUSTICE LEAGUE

Removing human bias from AI Algorithms
<https://www.ajlunited.org/>



Encourage Legislative Change

USING LAWS TO IMPEDE BAD ACTORS

Algorithmic Accountability Act (S. 3572)
<https://www.congress.gov/bill/117th-congress/senate-bill/3572/text>

Or just go to <https://www.congress.gov/> and type in "Artificial Intelligence"

**Questions?
Comments?
Ponderings?**

LET US KNOW!

Email Address

jess@themysticgeek.com

Leave a voice message

<https://www.speakpipe.com/TheMysticGeek>

Upcoming Episodes

DECEMBER 25TH

The Appeal to Tradition
(Holiday Special)

JANUARY 1ST

What's the Deal with New
Year's Resolutions?